

Park Row

The proactive estate agent



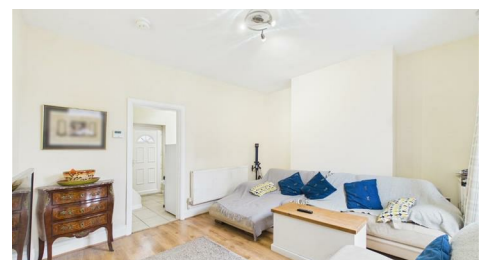
Malkiln Lane, Kippax, Leeds, LS25 7AZ

Offers In Excess Of £160,000



**** TERRACED HOME ** TWO BEDROOMS ** ENCLOSED REAR GARDEN ** GREAT FOR FIRST TIME BUYERS
** GOOD FOR INVESTORS ** WELL-PRESENTED ** CELLAR ** OFF STREET PARKING ***

**VIEWING IS ESSENTIAL TO FULLY APPRECIATE THE PROPERTY ON OFFER! CALL US ON 01977 681122 TO
BOOK A VIEWING! 'WE OPEN UNTIL 5.30PM MONDAY TO FRIDAYS and until 1PM SATURDAYS!**



FEDERATION
OF INDEPENDENT
AGENTS

INTRODUCTION

Nestled on Maltkiln Lane in the charming village of Kippax, Leeds, this delightful terraced cottage presents an excellent opportunity for first-time buyers and investors alike. With two well-proportioned bedrooms and a comfortable reception room, this home is both inviting and practical, making it an ideal choice for those seeking a cosy retreat.

The property boasts a well-maintained interior, ensuring that you can move in with ease and start enjoying your new home right away. The inclusion of a cellar adds a unique touch, offering ample potential for additional storage or even a creative project, allowing you to tailor the space to your needs.

Step outside to discover an enclosed rear garden that is not only private but also very easy to maintain, providing a perfect spot for relaxation or outdoor entertaining. The convenience of off-street parking further enhances the appeal of this lovely cottage, making it a practical choice for busy lifestyles.

Overall, this terraced home on Maltkiln Lane is a wonderful blend of comfort, potential, and convenience, making it a must-see for anyone looking to settle in the vibrant community of Kippax. Don't miss the chance to make this charming property your own.

GROUND FLOOR ACCOMMODATION

ENTRANCE

Enter through a uPVC door with double glazed glass panels within which leads into;

LOUNGE

13'11" x 11'8" (4.25 x 3.58)



A double glazed window to the front elevation, a central heating radiator and a door which leads into;



KITCHEN

10'8" x 6'10" (3.27 x 2.09)



A double glazed window to the rear elevation, white shaker-style wall and base units surrounding, roll-edge laminate worktop, a circular stainless steel sink with chrome taps over, a four ring gas hob with a built in extractor fan over and tiled splashback, a built in oven, tiled splashback, space for a freestanding fridge/freezer, white vertical radiator,



FEDERATION
OF INDEPENDENT
AGENTS



Park Row

BEDROOM ONE

14'2" x 9'3" (4.34 x 2.84)



Park Row

A double glazed window to the front elevation, a central heating radiator and an internal door which leads to a storage area.



Park Row

LOWER GROUND FLOOR

CELLAR

(10'0" x 8'6") + (7'7" x 7'11") ((3.05 x 2.60) + (2.32 x 2.42))

FIRST FLOOR ACCOMMODATION

LANDING

2'6" x 2'6" (0.78 x 0.77)



Park Row



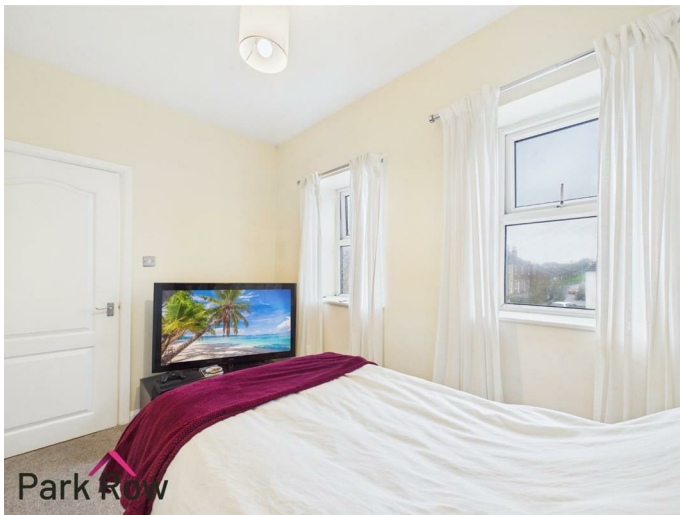
FEDERATION
OF INDEPENDENT
AGENTS

BEDROOM TWO

10'9" x 7'1" (3.30 x 2.16)



Two double glazed window to the rear elevation and a central heating radiator.



BATHROOM

3'4" x 4'7" (1.02 x 1.40)



A white suite comprising; a close coupled w/c, a pedestal hand basin with chrome taps over, a panel bath with a mains shower above and a glass shower screen, tiled to two walls around the bath, and a chrome towel rail.

EXTERIOR

FRONT



Accessed directly from the street.



FEDERATION
OF INDEPENDENT
AGENTS



REAR



Accessed via the pedestrian gate at the rear boundary and the external door in the kitchen, there is a ramped access from the pedestrian gate, with a border to either side of the ramp, the rest of the garden is laid with flags and has space for a shed.



FEDERATION
OF INDEPENDENT
AGENTS

AERIAL



HEATING AND APPLIANCES

The heating system and any appliances (including Burglar Alarms where fitted) mentioned in this brochure have not been tested by Park Row Properties. If you are interested in purchasing the property we advise that you have all services and appliances tested before entering a legal commitment to purchase.

MAINS UTILITIES, BROADBAND, MOBILE COVERAGE

Electricity: Mains
Gas: Mains
Sewerage: Mains
Water: Mains/Metered

Broadband: Fibre (FTTP)
Mobile: 5G

Please note: The Utilities, Broadband and Mobile Coverage for the property have been advised by the Vendor or obtained from online sources. We strive to ensure these details are accurate and reliable, however, we advise any potential buyer to carry out their own enquiries before proceeding.

MAKING AN OFFER

In order to comply with the Estate Agents (Undesirable Practises) Order 1991, Park Row Properties are required to verify "the status of any prospective purchaser... This includes the financial standing of that purchaser and his ability to exchange contracts". To allow us to comply with this order and before recommending acceptance of any offers, and subsequently making the property 'SOLD' each prospective purchaser will be required to demonstrate to 'Park Row Properties' that they are financially able to proceed with the purchase of the property. We provide truly Independent Mortgage Advice. Unlike many companies we are not tied, and more importantly not targeted to any Lender. We have instant on-line access to over 1000 mortgage deals provided by over 100 Lenders ensuring we are

unbeatable when identifying and recommending your new mortgage or re-mortgage requirements. Your home is at risk if you do not keep up repayments on a mortgage or other loan secured on it. Written quotations available on request. Life assurance is usually required. To arrange a no obligation appointment please contact your local office.

MEASUREMENTS

These approximate room sizes are only intended as general guidance. You must verify the dimensions carefully before ordering carpets or any built-in furniture.

OPENING HOURS

Mon - Fri 9.00am to 5.30pm
Saturday - 9.00am to 1pm
Sunday - CLOSED

TO CHECK OFFICE OPENING HOURS PLEASE CONTACT THE RELEVANT BRANCHES ON:

SHERBURN IN ELMET - 01977 681122
SELBY - 01757 241124
GOOLE - 01405 761199
PONTEFRAC & CASTLEFORD - 01977 791133

TENURE AND COUNCIL TAX

Tenure: Freehold
Local Authority: North Yorkshire Council
Tax Banding: A

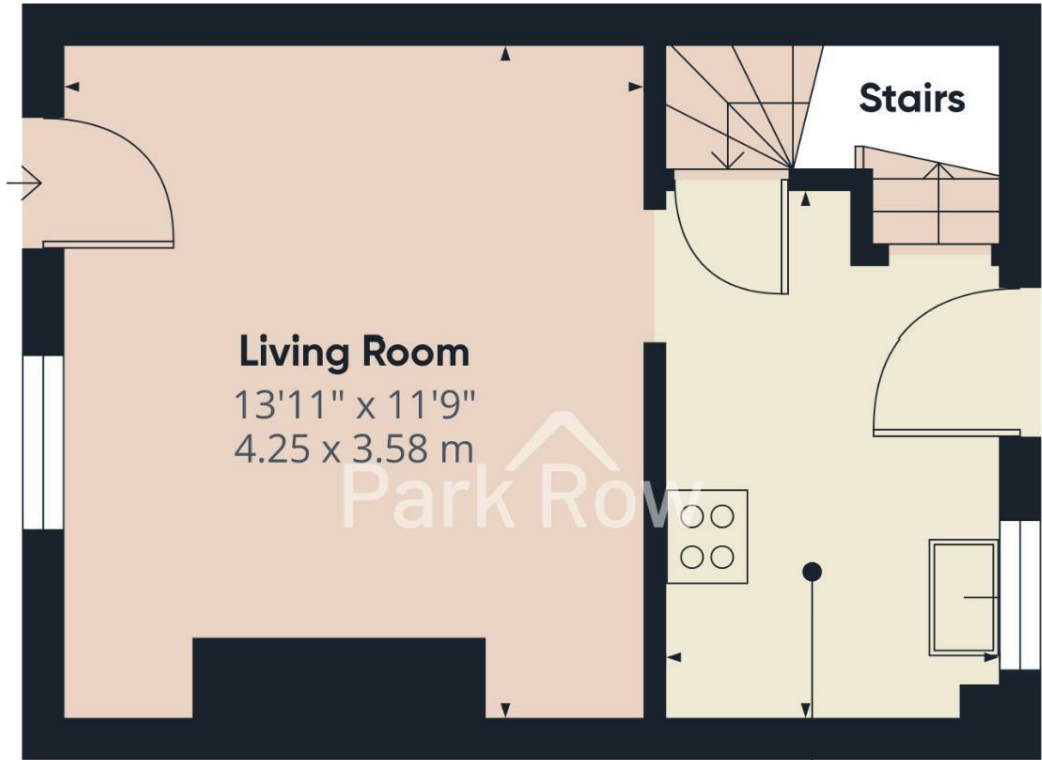
Please note: The Tenure, Local Authority and Tax Banding for the property have been advised by the Vendor or obtained from online sources. We strive to ensure these details are accurate and reliable, however, we advise any potential buyer to carry out their own enquiries before proceeding.

VIEWINGS

Strictly by appointment with the sole agents. If there is any point of particular importance to you we will be pleased to provide additional information or to make any further enquiries. We will also confirm that the property remains available. This is particularly important if you are travelling some distance to view the property.



FEDERATION
OF INDEPENDENT
AGENTS



Living Room
13'11" x 11'9"
4.25 x 3.58 m

Stairs

Kitchen
10'8" x 6'10"
3.27 x 2.09 m

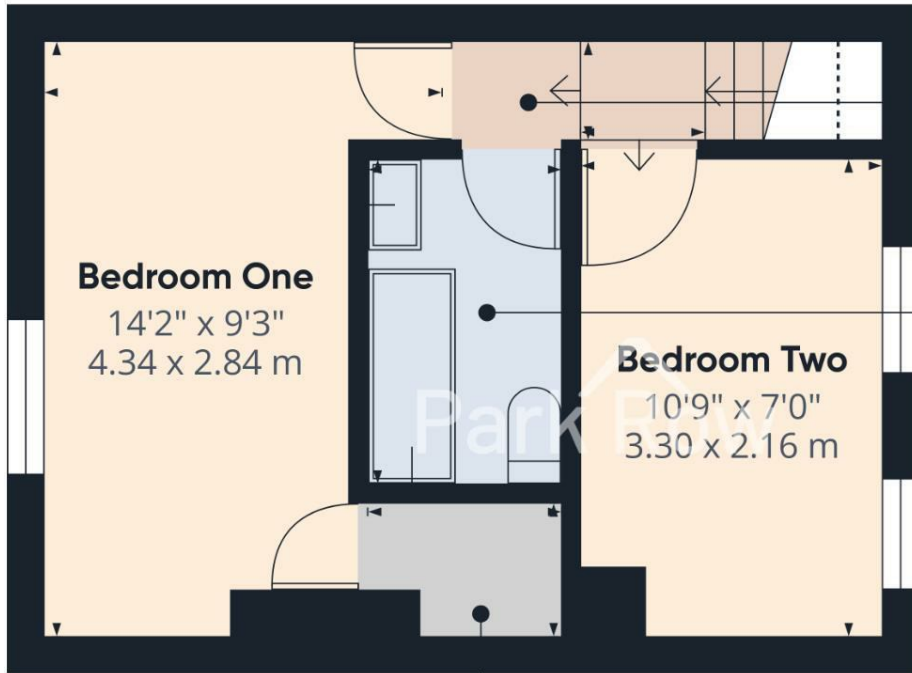
Approximate total area⁽¹⁾
231 ft²
21.5 m²

(1) Excluding balconies and terraces

Calculations reference the RICS IPMS 3C standard. Measurements are approximate and not to scale. This floor plan is intended for illustration only.

GIRAFFE360

Floor 0



Bedroom One
14'2" x 9'3"
4.34 x 2.84 m

Bedroom Two
10'9" x 7'0"
3.30 x 2.16 m

Landing
2'6" x 2'6"
0.77 x 0.78 m

Bathroom
7'5" x 4'5"
2.27 x 1.35 m

3'4" x 4'6"
1.02 x 1.40 m

Approximate total area⁽¹⁾
238 ft²
22.3 m²

(1) Excluding balconies and terraces

Reduced headroom
----- Below 5 ft/1.5 m

Calculations reference the RICS IPMS 3C standard. Measurements are approximate and not to scale. This floor plan is intended for illustration only.

GIRAFFE360

Floor 1





T 01977 681122
W www.parkrow.co.uk

34 Low Street, Sherburn In Elmet, North Yorkshire, LS25 6BA
sherburn@parkrow.co.uk

Energy Efficiency Rating		Environmental Impact (CO ₂) Rating	
Current	Potential	Current	Potential
83	63		